

NO.	DATE

SEAL



Perkins Eastman DC

ONE THOMAS CIRCLE, NW SUITE 270
WASHINGTON, DC 20005
T. 202.495.7430
F.

Owner:
WESTBROOK PARTNERS

Construction Manager:
DAVIS CONSTRUCTION

Civil / Site:
BOHLER DC

Landscape:
WOLF | JOSEY LANDSCAPE ARCHITECTS

Structural:
SK&A DC

Mechanical & Plumbing:
INTERFACE ENGINEERING

Electrical:
INTERFACE ENGINEERING

PROJECT TITLE:
MERIDIAN INTERNATIONAL CENTER

PROJECT No: 65930

DRAWING TITLE:
G1 - PARKING 2

SCALE: 1/16" = 1'-0"

A-102

SCHEMATIC DESIGN

03/13/18

Board of Zoning Adjustment
District of Columbia
CASE NO. 19688
EXHIBIT NO. 68A



C:\REVIT LOCAL\65930_Architectural_a.martinmacho.rvt
6/12/2018 12:08:42 PM

NO.	DATE

SEAL



Perkins Eastman DC

ONE THOMAS CIRCLE, NW SUITE 270
 WASHINGTON, DC 20005
 T. 202.495.7430
 F.

Owner:
WESTBROOK PARTNERS

Construction Manager:
DAVIS CONSTRUCTION

Civil / Site:
BOHLER DC

Landscape:
WOLF | JOSEY LANDSCAPE ARCHITECTS

Structural:
SK&A DC

Mechanical & Plumbing:
INTERFACE ENGINEERING

Electrical:
INTERFACE ENGINEERING

PROJECT TITLE:

MERIDIAN INTERNATIONAL CENTER

PROJECT No: 65930

DRAWING TITLE:
G0 - PARKING 1

SCALE: 1/16" = 1'-0"

A-103

SCHEMATIC DESIGN

03/13/18



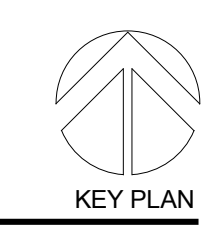
C:\REVIT_LOCAL\65930_Architectural_a.martinmacho.rvt
 6/12/2018 12:08:47 PM

GENERAL PLAN NOTES

- A REFER TO A-400 SERIES DRAWINGS FOR UNIT PLANS.
- B RESIDENTIAL UNIT DEMISING WALLS: 1HR RATED (UL U469); MIN. STC-55; 6-IN (TWO 2-1/2") METAL STUD FRAMING; (2) LAYERS 5/8" TYPE-X GWB EACH SIDE; ACOUSTIC INSULATION
- C RESIDENTIAL UNIT CORRIDOR WALLS: 1HR FIRE RATED (UL U419); MIN. STC-55; 6-IN METAL STUD; (2) LAYERS 5/8" TYPE-X GWB EACH SIDE; ACOUSTIC INSULATION
- D FLOORS BETWEEN RESIDENTIAL LEVELS TO MAINTAIN 2-HR FIRE RESISTANCE RATING
- E FLOORS BETWEEN RESIDENTIAL (R2), GARAGE (S2), AND CONFERENCE(A3) USES TO MAINTAIN 3-HR FIRE RESISTANCE RATING.
- G RESIDENTIAL CORRIDOR CEILINGS TO BE SUSPENDED GYPSUM WALL BOARD, 8'-0" A.F.F.
- J ALL DIMENSIONS ARE TO FACE OF GYP. BD. U.N.O.
- L ALL DIMENSIONS AT 90deg. ANGLES. U.N.O.
- M ALL MANUFACTURER'S NAME, TRADEMARK, AND LOGOS SHALL NOT BE VISIBLE.
- N PATCH AND LEVEL FLOOR SLAB AS REQUIRED FOR SCHEDULED FINISHES.
- O ALL WOOD BLOCKING FOR FRAMING AND MILLWORK TO BE FIRE RETARDANT TREATED.
- P PROVIDE ADDITIONAL FURRING AT COLUMNS AS REQUIRED FOR SWITCHES, OUTLETS, ETC.
- Q G.C. TO LAYOUT ALL PARTITION AND DOOR LOCATIONS ON FLOOR PRIOR TO PROCEEDING WITH CONSTRUCTION, OBTAIN LAYOUT ACCEPTANCE FROM ARCHITECT.
- J ALL INTERIOR RESIDENTIAL UNIT DOORS TO BE NOMINAL 36" SOLID CORE WOOD. U.N.O.
- F VERTICAL SHAFTS FOR CIRCULATION AND BUILDING SYSTEMS TO MAINTAIN 2HR FIRE RESISTANCE RATING
- H RESIDENTIAL UNIT CEILING TO BE EXPOSED STRUCTURAL SLAB ABOVE WITH PLASTER COATING, TYPICAL.
- I RESIDENTIAL UNIT BATHROOM AND CEILINGS TO BE SUSPENDED GYPSUM WALL BOARD, 8'-0" A.F.F.
- K ALL RESIDENTIAL UNIT CORRIDOR ENTRY DOORS TO HAVE A 45 MIN. FIRE RATING.



NO.	DATE



Perkins Eastman DC

ONE THOMAS CIRCLE, NW SUITE 270
 WASHINGTON, DC 20005
 T. 202.495.7430
 F.

Owner:
WESTBROOK PARTNERS

Construction Manager:
DAVIS CONSTRUCTION

Civil / Site:
BOHLER DC

Landscape:
WOLF | JOSEY LANDSCAPE ARCHITECTS

Structural:
SK&A DC

Mechanical & Plumbing:
INTERFACE ENGINEERING

Electrical:
INTERFACE ENGINEERING

PROJECT TITLE:
MERIDIAN INTERNATIONAL CENTER

PROJECT No: 65930

DRAWING TITLE:
FIRST FLOOR

SCALE: 1/16" = 1'-0"

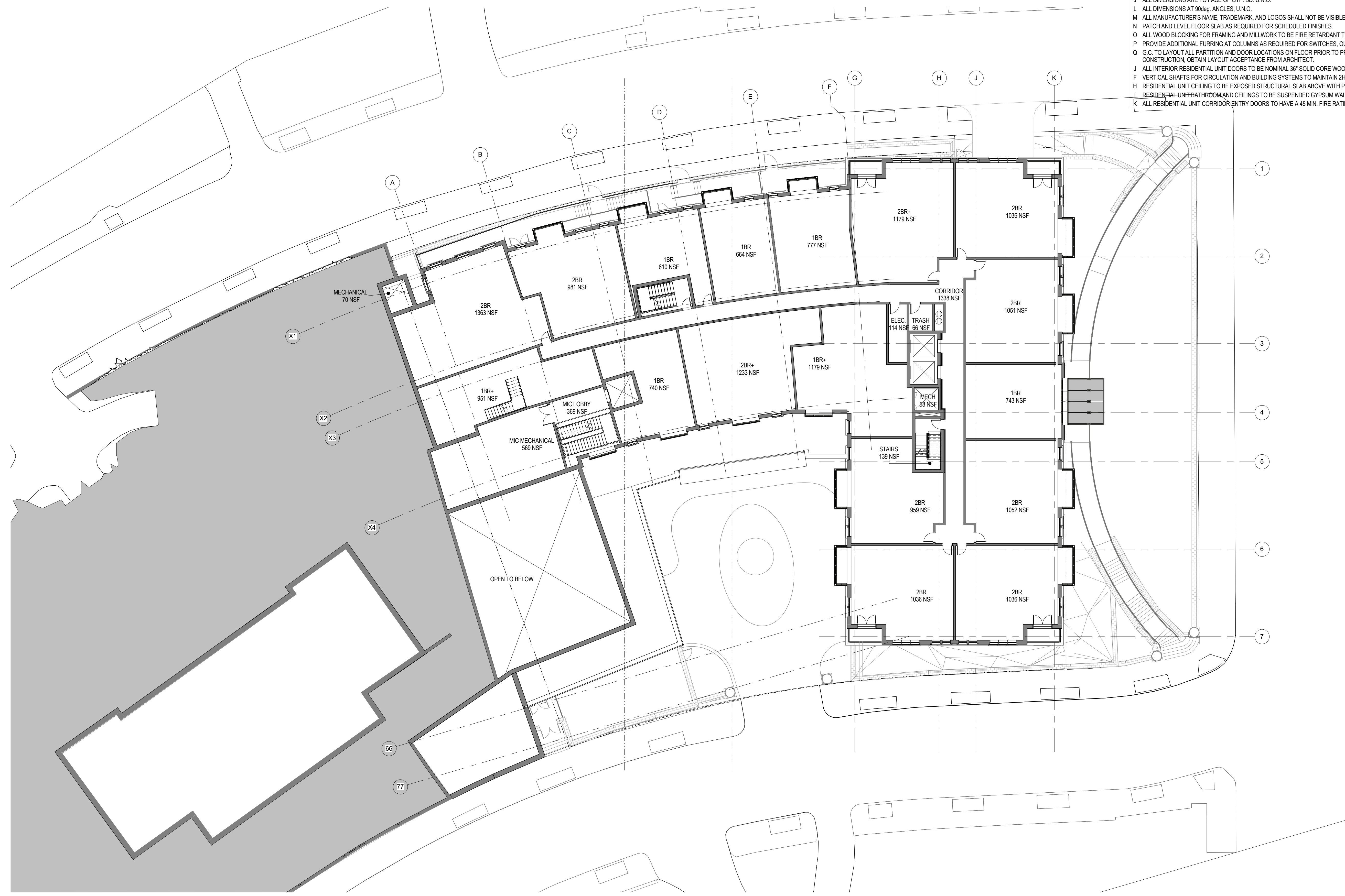
A-104

SCHEMATIC DESIGN

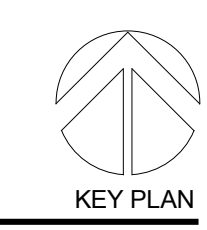
03/13/18

GENERAL PLAN NOTES

- A REFER TO A-400 SERIES DRAWINGS FOR UNIT PLANS.
- B RESIDENTIAL UNIT DEMISING WALLS: 1HR RATED (UL U493); MIN. STC-55; 6-IN (TWO 2-1/2") METAL STUD FRAMING; (2) LAYERS 5/8" TYPE-X GWB EACH SIDE; ACOUSTIC INSULATION
- C RESIDENTIAL UNIT CORRIDOR WALLS: 1HR FIRE RATED (UL U419); MIN. STC-55; 6-IN METAL STUD; (2) LAYERS 5/8" TYPE-X GWB EACH SIDE; ACOUSTIC INSULATION
- D FLOORS BETWEEN RESIDENTIAL LEVELS TO MAINTAIN 2-HR FIRE RESISTANCE RATING
- E FLOORS BETWEEN RESIDENTIAL (R2), GARAGE (S2), AND CONFERENCE(A3) USES TO MAINTAIN 3-HR FIRE RESISTANCE RATING.
- G RESIDENTIAL CORRIDOR CEILINGS TO BE SUSPENDED GYPSUM WALL BOARD, 8'-0" A.F.F.
- J ALL DIMENSIONS ARE TO FACE OF GYP. BD. U.N.O.
- L ALL DIMENSIONS AT 90deg. ANGLES. U.N.O.
- M ALL MANUFACTURER'S NAME, TRADEMARK, AND LOGOS SHALL NOT BE VISIBLE.
- N PATCH AND LEVEL FLOOR SLAB AS REQUIRED FOR SCHEDULED FINISHES.
- O ALL WOOD BLOCKING FOR FRAMING AND MILLWORK TO BE FIRE RETARDANT TREATED.
- P PROVIDE ADDITIONAL FURRING AT COLUMNS AS REQUIRED FOR SWITCHES, OUTLETS, ETC.
- Q G.C. TO LAYOUT ALL PARTITIONS AND DOOR LOCATIONS ON FLOOR PRIOR TO PROCEEDING WITH CONSTRUCTION. OBTAIN LAYOUT ACCEPTANCE FROM ARCHITECT.
- J ALL INTERIOR RESIDENTIAL UNIT DOORS TO BE NOMINAL 36" SOLID CORE WOOD. U.N.O.
- F VERTICAL SHAFTS FOR CIRCULATION AND BUILDING SYSTEMS TO MAINTAIN 2HR FIRE RESISTANCE RATING
- H RESIDENTIAL UNIT CEILING TO BE EXPOSED STRUCTURAL SLAB ABOVE WITH PLASTER COATING. TYPICAL
- I RESIDENTIAL UNIT BATHROOM AND CEILINGS TO BE SUSPENDED GYPSUM WALL BOARD, 8'-0" A.F.F.
- K ALL RESIDENTIAL UNIT CORRIDOR ENTRY DOORS TO HAVE A 45 MIN. FIRE RATING.



NO.	DATE



Perkins Eastman DC
 ONE THOMAS CIRCLE, NW SUITE 270
 WASHINGTON, DC 20005
 T. 202.495.7430
 F.

Owner:
WESTBROOK PARTNERS

Construction Manager:
DAVIS CONSTRUCTION

Civil / Site:
BOHLER DC

Landscape:
WOLF | JOSEY LANDSCAPE ARCHITECTS

Structural:
SK&A DC

Mechanical & Plumbing:
INTERFACE ENGINEERING

Electrical:
INTERFACE ENGINEERING

PROJECT TITLE:
MERIDIAN INTERNATIONAL CENTER

PROJECT No: 65930

DRAWING TITLE:
SECOND FLOOR

SCALE: 1/16" = 1'-0"

A-105

SCHEMATIC DESIGN

03/13/18

C:\REVIT LOCAL\65930_Architectural_a.martinmacho.rvt
 6/12/2018 12:08:58 PM

GENERAL PLAN NOTES

- A REFER TO A-100 SERIES DRAWINGS FOR UNIT PLANS.
- B RESIDENTIAL UNIT DEMISING WALLS: 1HR RATED (UL U463); MIN. STC-55; 6-IN (TWO 2-1/2") METAL STUD FRAMING; (2) LAYERS 5/8" TYPE-X GWB EACH SIDE; ACOUSTIC INSULATION
- C RESIDENTIAL UNIT CORRIDOR WALLS: 1HR FIRE RATED (UL U419); MIN. STC-55; 6-IN METAL STUD; (2) LAYERS 5/8" TYPE-X GWB EACH SIDE; ACOUSTIC INSULATION
- D FLOORS BETWEEN RESIDENTIAL LEVELS TO MAINTAIN 2-HR FIRE RESISTANCE RATING
- E FLOORS BETWEEN RESIDENTIAL (R2), GARAGE (S2), AND CONFERENCE(A3) USES TO MAINTAIN 3-HR FIRE RESISTANCE RATING.
- G RESIDENTIAL CORRIDOR CEILINGS TO BE SUSPENDED GYPSUM WALL BOARD, 8'-0" A.F.F.
- J ALL DIMENSIONS ARE TO FACE OF GYP. BD. U.N.O.
- L ALL DIMENSIONS AT 90deg. ANGLES, U.N.O.
- M ALL MANUFACTURER'S NAME, TRADEMARK, AND LOGOS SHALL NOT BE VISIBLE.
- N PATCH AND LEVEL FLOOR SLAB AS REQUIRED FOR SCHEDULED FINISHES.
- O ALL WOOD BLOCKING FOR FRAMING AND MILLWORK TO BE FIRE RETARDANT TREATED.
- P PROVIDE ADDITIONAL FURRING AT COLUMNS AS REQUIRED FOR SWITCHES, OUTLETS, ETC.
- Q G.C. TO LAYOUT ALL PARTITION AND DOOR LOCATIONS ON FLOOR PRIOR TO PROCEEDING WITH CONSTRUCTION, OBTAIN LAYOUT ACCEPTANCE FROM ARCHITECT.
- J ALL INTERIOR RESIDENTIAL UNIT DOORS TO BE NOMINAL 36" SOLID CORE WOOD, U.N.O.
- F VERTICAL SHAFTS FOR CIRCULATION AND BUILDING SYSTEMS TO MAINTAIN 2HR FIRE RESISTANCE RATING
- H RESIDENTIAL UNIT CEILING TO BE EXPOSED STRUCTURAL SLAB ABOVE WITH PLASTER COATING, TYPICAL.
- I RESIDENTIAL UNIT BATHROOM AND CEILINGS TO BE SUSPENDED GYPSUM WALL BOARD, 8'-0" A.F.F.
- K ALL RESIDENTIAL UNIT CORRIDOR ENTRY DOORS TO HAVE A 45 MIN. FIRE RATING.



NO.	DATE



Perkins Eastman DC
 ONE THOMAS CIRCLE, NW SUITE 270
 WASHINGTON, DC 20005
 T. 202.495.7430
 F.

Owner:
WESTBROOK PARTNERS

Construction Manager:
DAVIS CONSTRUCTION

Civil / Site:
BOHLER DC

Landscape:
WOLF | JOSEY LANDSCAPE ARCHITECTS

Structural:
SK&A DC

Mechanical & Plumbing:
INTERFACE ENGINEERING

Electrical:
INTERFACE ENGINEERING

PROJECT TITLE:
MERIDIAN INTERNATIONAL CENTER

PROJECT No: 65930

DRAWING TITLE:
THIRD FLOOR

SCALE: 1/16" = 1'-0"

A-106

SCHEMATIC DESIGN

03/13/18

GENERAL PLAN NOTES

- A REFER TO A-400 SERIES DRAWINGS FOR UNIT PLANS.
- B RESIDENTIAL UNIT DEMISING WALLS: 1HR RATED (UL U493); MIN. STC-55; 6-IN (TWO 2-1/2") METAL STUD FRAMING; (2) LAYERS 5/8" TYPE-X GWB EACH SIDE; ACOUSTIC INSULATION
- C RESIDENTIAL UNIT CORRIDOR WALLS: 1HR FIRE RATED (UL U419); MIN. STC-55; 6-IN METAL STUD; (2) LAYERS 5/8" TYPE-X GWB EACH SIDE; ACOUSTIC INSULATION
- D FLOORS BETWEEN RESIDENTIAL LEVELS TO MAINTAIN 2-HR FIRE RESISTANCE RATING
- E FLOORS BETWEEN RESIDENTIAL (R2), GARAGE (S2), AND CONFERENCE(A3) USES TO MAINTAIN 3-HR FIRE RESISTANCE RATING.
- G RESIDENTIAL CORRIDOR CEILINGS TO BE SUSPENDED GYPSUM WALL BOARD, 8'-0" A.F.F.
- J ALL DIMENSIONS ARE TO FACE OF GYP. BD. U.N.O.
- L ALL DIMENSIONS AT 90deg. ANGLES, U.N.O.
- M ALL MANUFACTURER'S NAME, TRADEMARK, AND LOGOS SHALL NOT BE VISIBLE.
- N PATCH AND LEVEL FLOOR SLAB AS REQUIRED FOR SCHEDULED FINISHES.
- O ALL WOOD BLOCKING FOR FRAMING AND MILLWORK TO BE FIRE RETARDANT TREATED.
- P PROVIDE ADDITIONAL FURRING AT COLUMNS AS REQUIRED FOR SWITCHES, OUTLETS, ETC.
- Q G.C. TO LAYOUT ALL PARTITIONS AND DOOR LOCATIONS ON FLOOR PRIOR TO PROCEEDING WITH CONSTRUCTION, OBTAIN LAYOUT ACCEPTANCE FROM ARCHITECT.
- J ALL INTERIOR RESIDENTIAL UNIT DOORS TO BE NOMINAL 36" SOLID CORE WOOD, U.N.O.
- F VERTICAL SHAFTS FOR CIRCULATION AND BUILDING SYSTEMS TO MAINTAIN 2HR FIRE RESISTANCE RATING
- H RESIDENTIAL UNIT CEILING TO BE EXPOSED STRUCTURAL SLAB ABOVE WITH PLASTER COATING, TYPICAL.
- I RESIDENTIAL UNIT BATHROOM AND CEILINGS TO BE SUSPENDED GYPSUM WALL BOARD, 8'-0" A.F.F.
- K ALL RESIDENTIAL UNIT CORRIDOR ENTRY DOORS TO HAVE A 45 MIN. FIRE RATING.

NO.	DATE



Perkins Eastman DC

ONE THOMAS CIRCLE, NW SUITE 270
WASHINGTON, DC 20005
T. 202.495.7430
F.

Owner:
WESTBROOK PARTNERS

Construction Manager:
DAVIS CONSTRUCTION

Civil / Site:
BOHLER DC

Landscape:
WOLF | JOSEY LANDSCAPE ARCHITECTS

Structural:
SK&A DC

Mechanical & Plumbing:
INTERFACE ENGINEERING

Electrical:
INTERFACE ENGINEERING

PROJECT TITLE:
MERIDIAN INTERNATIONAL CENTER

PROJECT No: 65930

DRAWING TITLE:
FOURTH FLOOR

SCALE: 1/16" = 1'-0"

A-107

SCHEMATIC DESIGN

03/13/18

GENERAL PLAN NOTES

- A REFER TO A-400 SERIES DRAWINGS FOR UNIT PLANS.
- B RESIDENTIAL UNIT DEMISING WALLS: 1HR RATED (UL U493); MIN. STC-55; 6-IN (TWO 2-1/2") METAL STUD FRAMING; (2) LAYERS 5/8" TYPE-X GWB EACH SIDE; ACOUSTIC INSULATION
- C RESIDENTIAL UNIT CORRIDOR WALLS: 1HR FIRE RATED (UL U419); MIN. STC-55; 6-IN METAL STUD; (2) LAYERS 5/8" TYPE-X GWB EACH SIDE; ACOUSTIC INSULATION
- D FLOORS BETWEEN RESIDENTIAL LEVELS TO MAINTAIN 2-HR FIRE RESISTANCE RATING
- E FLOORS BETWEEN RESIDENTIAL (R2), GARAGE (S2), AND CONFERENCE(A3) USES TO MAINTAIN 3-HR FIRE RESISTANCE RATING.
- G RESIDENTIAL CORRIDOR CEILINGS TO BE SUSPENDED GYPSUM WALL BOARD, 8'-0" A.F.F.
- J ALL DIMENSIONS ARE TO FACE OF GYP. BD. U.N.O.
- L ALL DIMENSIONS AT 90deg. ANGLES. U.N.O.
- M ALL MANUFACTURER'S NAME, TRADEMARK, AND LOGOS SHALL NOT BE VISIBLE.
- N PATCH AND LEVEL FLOOR SLAB AS REQUIRED FOR SCHEDULED FINISHES.
- O ALL WOOD BLOCKING FOR FRAMING AND MILLWORK TO BE FIRE RETARDANT TREATED.
- P PROVIDE ADDITIONAL FURRING AT COLUMNS AS REQUIRED FOR SWITCHES, OUTLETS, ETC.
- Q G.C. TO LAYOUT ALL PARTITION AND DOOR LOCATIONS ON FLOOR PRIOR TO PROCEEDING WITH CONSTRUCTION. OBTAIN LAYOUT ACCEPTANCE FROM ARCHITECT.
- J ALL INTERIOR RESIDENTIAL UNIT DOORS TO BE NOMINAL 36" SOLID CORE WOOD. U.N.O.
- F VERTICAL SHAFTS FOR CIRCULATION AND BUILDING SYSTEMS TO MAINTAIN 2HR FIRE RESISTANCE RATING
- H RESIDENTIAL UNIT CEILING TO BE EXPOSED STRUCTURAL SLAB ABOVE WITH PLASTER COATING. TYPICAL.
- I RESIDENTIAL UNIT BATHROOM AND CEILINGS TO BE SUSPENDED GYPSUM WALL BOARD, 8'-0" A.F.F.
- K ALL RESIDENTIAL UNIT CORRIDOR ENTRY DOORS TO HAVE A 45 MIN. FIRE RATING.

NO.	DATE



SEAL



Perkins Eastman DC

ONE THOMAS CIRCLE, NW SUITE 270
WASHINGTON, DC 20005
T. 202.495.7430
F.

Owner:
WESTBROOK PARTNERS

Construction Manager:
DAVIS CONSTRUCTION

Civil / Site:
BOHLER DC

Landscape:
WOLF | JOSEY LANDSCAPE ARCHITECTS

Structural:
SK&A DC

Mechanical & Plumbing:
INTERFACE ENGINEERING

Electrical:
INTERFACE ENGINEERING

PROJECT TITLE:
MERIDIAN INTERNATIONAL CENTER

PROJECT No: 65930

DRAWING TITLE:
FIFTH FLOOR

SCALE: 1/16" = 1'-0"

A-108

SCHEMATIC DESIGN

03/13/18

GENERAL PLAN NOTES

- A REFER TO A-400 SERIES DRAWINGS FOR UNIT PLANS.
- B RESIDENTIAL UNIT DEMISING WALLS: 1HR RATED (UL U493); MIN. STC-55; 6-IN (TWO 2-1/2") METAL STUD FRAMING; (2) LAYERS 5/8" TYPE-X GWB EACH SIDE; ACOUSTIC INSULATION
- C RESIDENTIAL UNIT CORRIDOR WALLS: 1HR FIRE RATED (UL U419); MIN. STC-55; 6-IN METAL STUD; (2) LAYERS 5/8" TYPE-X GWB EACH SIDE; ACOUSTIC INSULATION
- D FLOORS BETWEEN RESIDENTIAL LEVELS TO MAINTAIN 2-HR FIRE RESISTANCE RATING
- E FLOORS BETWEEN RESIDENTIAL (R2), GARAGE (S2), AND CONFERENCE(A3) USES TO MAINTAIN 3-HR FIRE RESISTANCE RATING.
- G RESIDENTIAL CORRIDOR CEILINGS TO BE SUSPENDED GYPSUM WALL BOARD, 8'-0" A.F.F.
- J ALL DIMENSIONS ARE TO FACE OF GYP. BD. U.N.O.
- L ALL DIMENSIONS AT 90deg. ANGLES. U.N.O.
- M ALL MANUFACTURER'S NAME, TRADEMARK, AND LOGOS SHALL NOT BE VISIBLE.
- N PATCH AND LEVEL FLOOR SLAB AS REQUIRED FOR SCHEDULED FINISHES.
- O ALL WOOD BLOCKING FOR FRAMING AND MILLWORK TO BE FIRE RETARDANT TREATED.
- P PROVIDE ADDITIONAL FURRING AT COLUMNS AS REQUIRED FOR SWITCHES, OUTLETS, ETC.
- Q G.C. TO LAYOUT ALL PARTITION AND DOOR LOCATIONS ON FLOOR PRIOR TO PROCEEDING WITH CONSTRUCTION. OBTAIN LAYOUT ACCEPTANCE FROM ARCHITECT.
- J ALL INTERIOR RESIDENTIAL UNIT DOORS TO BE NOMINAL 36" SOLID CORE WOOD. U.N.O.
- F VERTICAL SHAFTS FOR CIRCULATION AND BUILDING SYSTEMS TO MAINTAIN 2HR FIRE RESISTANCE RATING
- H RESIDENTIAL UNIT CEILING TO BE EXPOSED STRUCTURAL SLAB ABOVE WITH PLASTER COATING. TYPICAL.
- I RESIDENTIAL UNIT BATHROOM AND CEILINGS TO BE SUSPENDED GYPSUM WALL BOARD, 8'-0" A.F.F.
- K ALL RESIDENTIAL UNIT CORRIDOR ENTRY DOORS TO HAVE A 45 MIN. FIRE RATING.

NO.	DATE

SEAL



Perkins Eastman DC

ONE THOMAS CIRCLE, NW SUITE 270
WASHINGTON, DC 20005
T. 202.495.7430
F.

Owner:
WESTBROOK PARTNERS

Construction Manager:
DAVIS CONSTRUCTION

Civil / Site:
BOHLER DC

Landscape:
WOLF | JOSEY LANDSCAPE ARCHITECTS

Structural:
SK&A DC

Mechanical & Plumbing:
INTERFACE ENGINEERING

Electrical:
INTERFACE ENGINEERING

PROJECT TITLE:
MERIDIAN INTERNATIONAL CENTER

PROJECT No: 65930

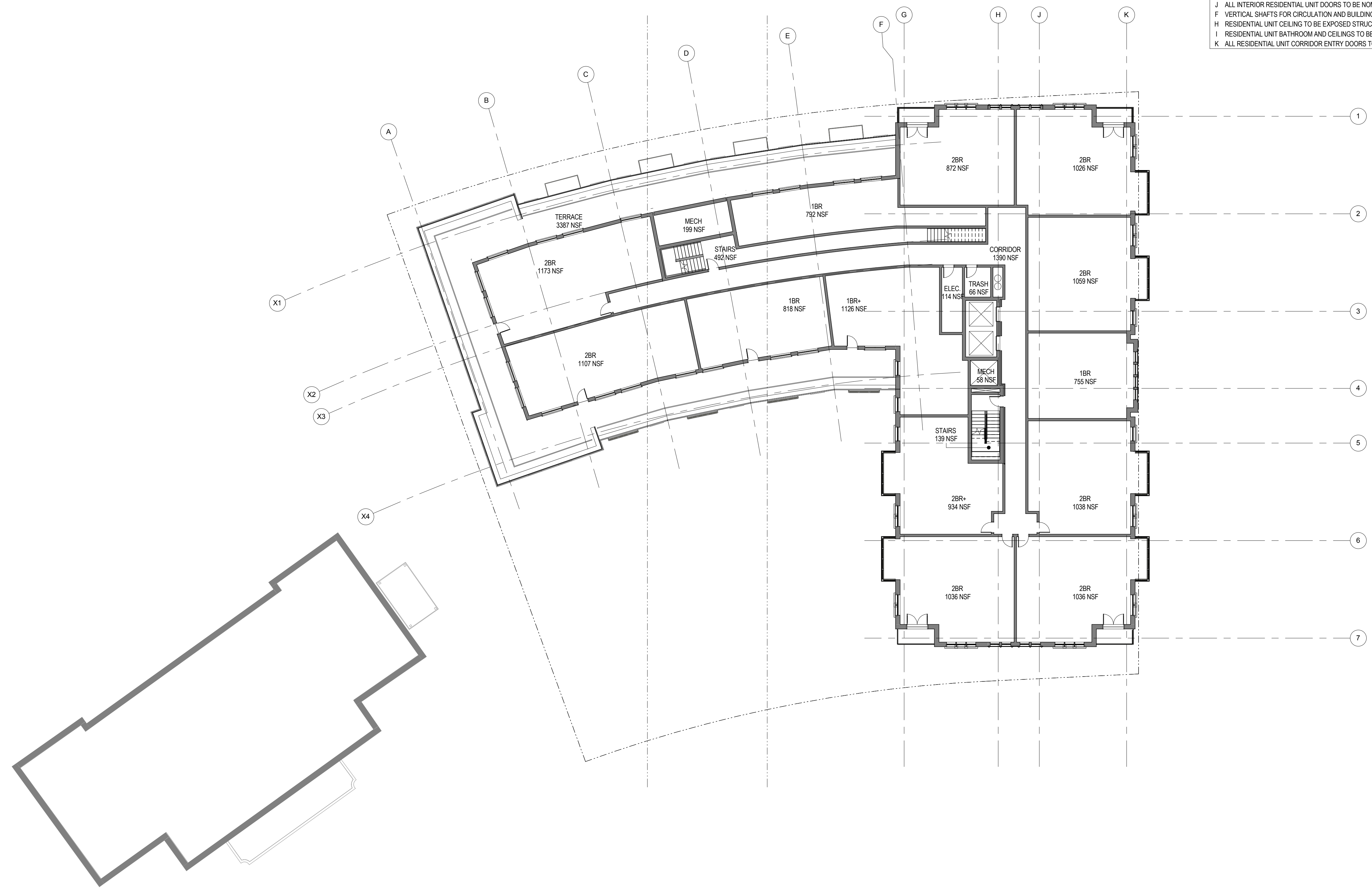
DRAWING TITLE:
SIXTH FLOOR

SCALE: 1/16" = 1'-0"

A-109

SCHEMATIC DESIGN

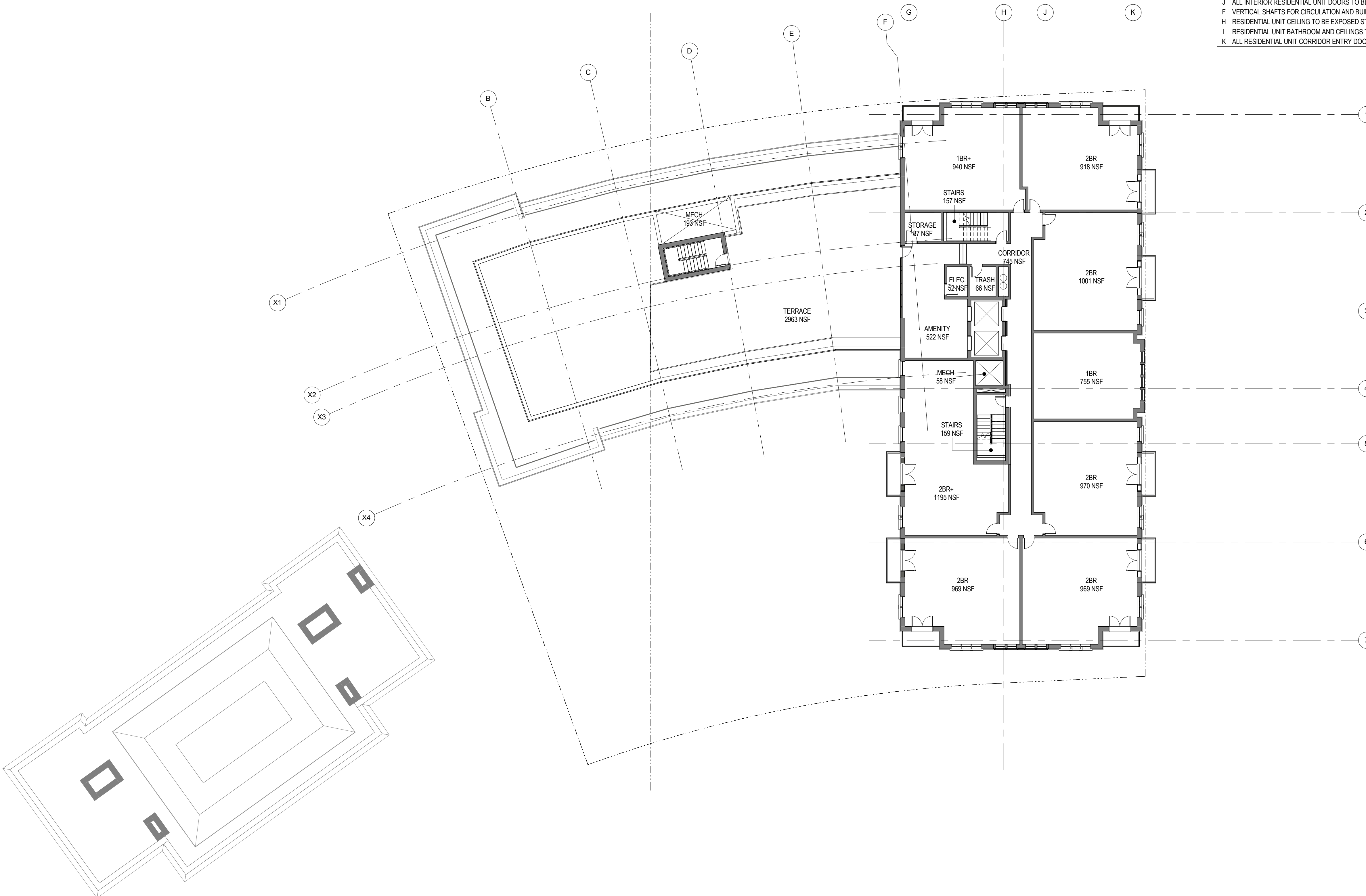
03/13/18



GENERAL PLAN NOTES

- A REFER TO A-400 SERIES DRAWINGS FOR UNIT PLANS.
- B RESIDENTIAL UNIT DEMISING WALLS: 1HR RATED (UL U469); MIN. STC-55; 6-IN (TWO 2-1/2") METAL STUD FRAMING; (2) LAYERS 5/8" TYPE-X GWB EACH SIDE; ACOUSTIC INSULATION
- C RESIDENTIAL UNIT CORRIDOR WALLS: 1HR FIRE RATED (UL U419); MIN. STC-55; 6-IN METAL STUD; (2) LAYERS 5/8" TYPE-X GWB EACH SIDE; ACOUSTIC INSULATION
- D FLOORS BETWEEN RESIDENTIAL LEVELS TO MAINTAIN 2-HR FIRE RESISTANCE RATING
- E FLOORS BETWEEN RESIDENTIAL (R2), GARAGE (S2), AND CONFERENCE(A3) USES TO MAINTAIN 3-HR FIRE RESISTANCE RATING.
- G RESIDENTIAL CORRIDOR CEILINGS TO BE SUSPENDED GYPSUM WALL BOARD, 8'-0" A.F.F.
- J ALL DIMENSIONS ARE TO FACE OF GYP. BD. U.N.O.
- L ALL DIMENSIONS AT 90deg. ANGLES. U.N.O.
- M ALL MANUFACTURER'S NAME, TRADEMARK, AND LOGOS SHALL NOT BE VISIBLE.
- N PATCH AND LEVEL FLOOR SLAB AS REQUIRED FOR SCHEDULED FINISHES.
- O ALL WOOD BLOCKING FOR FRAMING AND MILLWORK TO BE FIRE RETARDANT TREATED.
- P PROVIDE ADDITIONAL FURRING AT COLUMNS AS REQUIRED FOR SWITCHES, OUTLETS, ETC.
- Q G.C. TO LAYOUT ALL PARTITION AND DOOR LOCATIONS ON FLOOR PRIOR TO PROCEEDING WITH CONSTRUCTION. OBTAIN LAYOUT ACCEPTANCE FROM ARCHITECT.
- J ALL INTERIOR RESIDENTIAL UNIT DOORS TO BE NOMINAL 36" SOLID CORE WOOD. U.N.O.
- F VERTICAL SHAFTS FOR CIRCULATION AND BUILDING SYSTEMS TO MAINTAIN 2HR FIRE RESISTANCE RATING
- H RESIDENTIAL UNIT CEILING TO BE EXPOSED STRUCTURAL SLAB ABOVE WITH PLASTER COATING. TYPICAL.
- I RESIDENTIAL UNIT BATHROOM AND CEILINGS TO BE SUSPENDED GYPSUM WALL BOARD, 8'-0" A.F.F.
- K ALL RESIDENTIAL UNIT CORRIDOR ENTRY DOORS TO HAVE A 45 MIN. FIRE RATING.

NO.	DATE



SEAL



Perkins Eastman DC

ONE THOMAS CIRCLE, NW SUITE 270
WASHINGTON, DC 20005
T. 202.495.7430
F.

Owner:
WESTBROOK PARTNERS

Construction Manager:
DAVIS CONSTRUCTION

Civil / Site:
BOHLER DC

Landscape:
WOLF | JOSEY LANDSCAPE ARCHITECTS

Structural:
SK&A DC

Mechanical & Plumbing:
INTERFACE ENGINEERING

Electrical:
INTERFACE ENGINEERING

PROJECT TITLE:
MERIDIAN INTERNATIONAL CENTER

PROJECT No: 65930
DRAWING TITLE:
SEVENTH FLOOR

SCALE: 1/16" = 1'-0"

A-110

SCHEMATIC DESIGN

03/13/18

GENERAL PLAN NOTES

- A REFER TO A-400 SERIES DRAWINGS FOR UNIT PLANS.
- B RESIDENTIAL UNIT DEMISING WALLS: 1HR RATED (UL U469); MIN. STC-55; 6-IN (TWO 2-1/2") METAL STUD FRAMING; (2) LAYERS 5/8" TYPE-X GWB EACH SIDE; ACOUSTIC INSULATION
- C RESIDENTIAL UNIT CORRIDOR WALLS: 1HR FIRE RATED (UL U419); MIN. STC-55; 6-IN METAL STUD; (2) LAYERS 5/8" TYPE-X GWB EACH SIDE; ACOUSTIC INSULATION
- D FLOORS BETWEEN RESIDENTIAL LEVELS TO MAINTAIN 2-HR FIRE RESISTANCE RATING
- E FLOORS BETWEEN RESIDENTIAL (R2), GARAGE (S2), AND CONFERENCE(A3) USES TO MAINTAIN 3-HR FIRE RESISTANCE RATING.
- G RESIDENTIAL CORRIDOR CEILINGS TO BE SUSPENDED GYPSUM WALL BOARD, 8'-0" A.F.F.
- J ALL DIMENSIONS ARE TO FACE OF GYP. BD. U.N.O.
- L ALL DIMENSIONS AT 90deg. ANGLES. U.N.O.
- M ALL MANUFACTURER'S NAME, TRADEMARK, AND LOGOS SHALL NOT BE VISIBLE.
- N PATCH AND LEVEL FLOOR SLAB AS REQUIRED FOR SCHEDULED FINISHES.
- O ALL WOOD BLOCKING FOR FRAMING AND MILLWORK TO BE FIRE RETARDANT TREATED.
- P PROVIDE ADDITIONAL FURRING AT COLUMNS AS REQUIRED FOR SWITCHES, OUTLETS, ETC.
- Q G.C. TO LAYOUT ALL PARTITION AND DOOR LOCATIONS ON FLOOR PRIOR TO PROCEEDING WITH CONSTRUCTION. OBTAIN LAYOUT ACCEPTANCE FROM ARCHITECT.
- J ALL INTERIOR RESIDENTIAL UNIT DOORS TO BE NOMINAL 36" SOLID CORE WOOD, U.N.O.
- F VERTICAL SHAFTS FOR CIRCULATION AND BUILDING SYSTEMS TO MAINTAIN 2HR FIRE RESISTANCE RATING
- H RESIDENTIAL UNIT CEILING TO BE EXPOSED STRUCTURAL SLAB ABOVE WITH PLASTER COATING, TYPICAL.
- I RESIDENTIAL UNIT BATHROOM AND CEILINGS TO BE SUSPENDED GYPSUM WALL BOARD, 8'-0" A.F.F.
- K ALL RESIDENTIAL UNIT CORRIDOR ENTRY DOORS TO HAVE A 45 MIN. FIRE RATING.

NO.	DATE

SEAL



Perkins Eastman DC

ONE THOMAS CIRCLE, NW SUITE 270
WASHINGTON, DC 20005
T. 202.495.7430
F.

Owner:
WESTBROOK PARTNERS

Construction Manager:
DAVIS CONSTRUCTION

Civil / Site:
BOHLER DC

Landscape:
WOLF | JOSEY LANDSCAPE ARCHITECTS

Structural:
SK&A DC

Mechanical & Plumbing:
INTERFACE ENGINEERING

Electrical:
INTERFACE ENGINEERING

PROJECT TITLE:
MERIDIAN INTERNATIONAL CENTER

PROJECT No: 65930

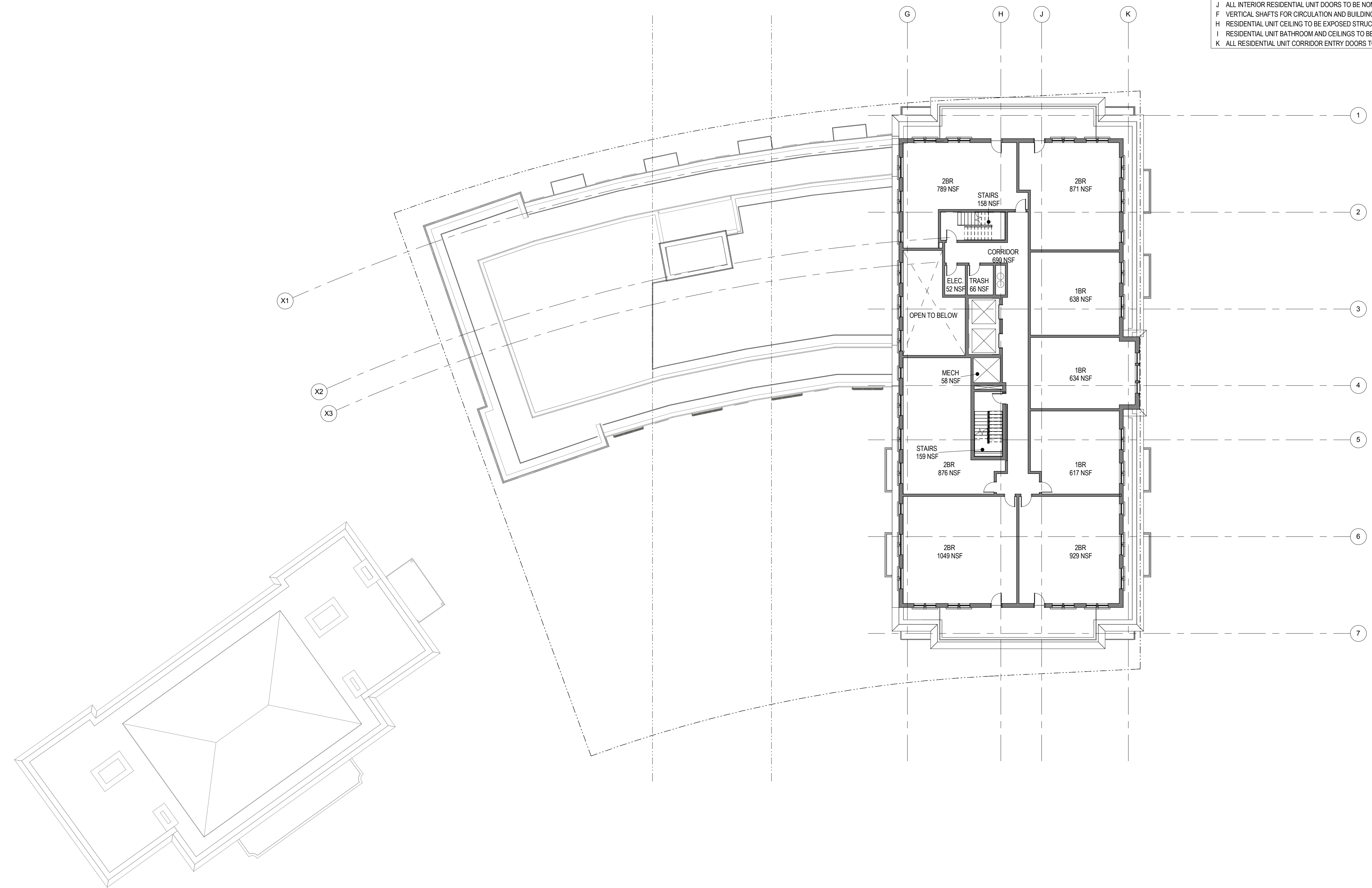
DRAWING TITLE:
EIGHTH FLOOR

SCALE: 1/16" = 1'-0"

A-111

SCHEMATIC DESIGN

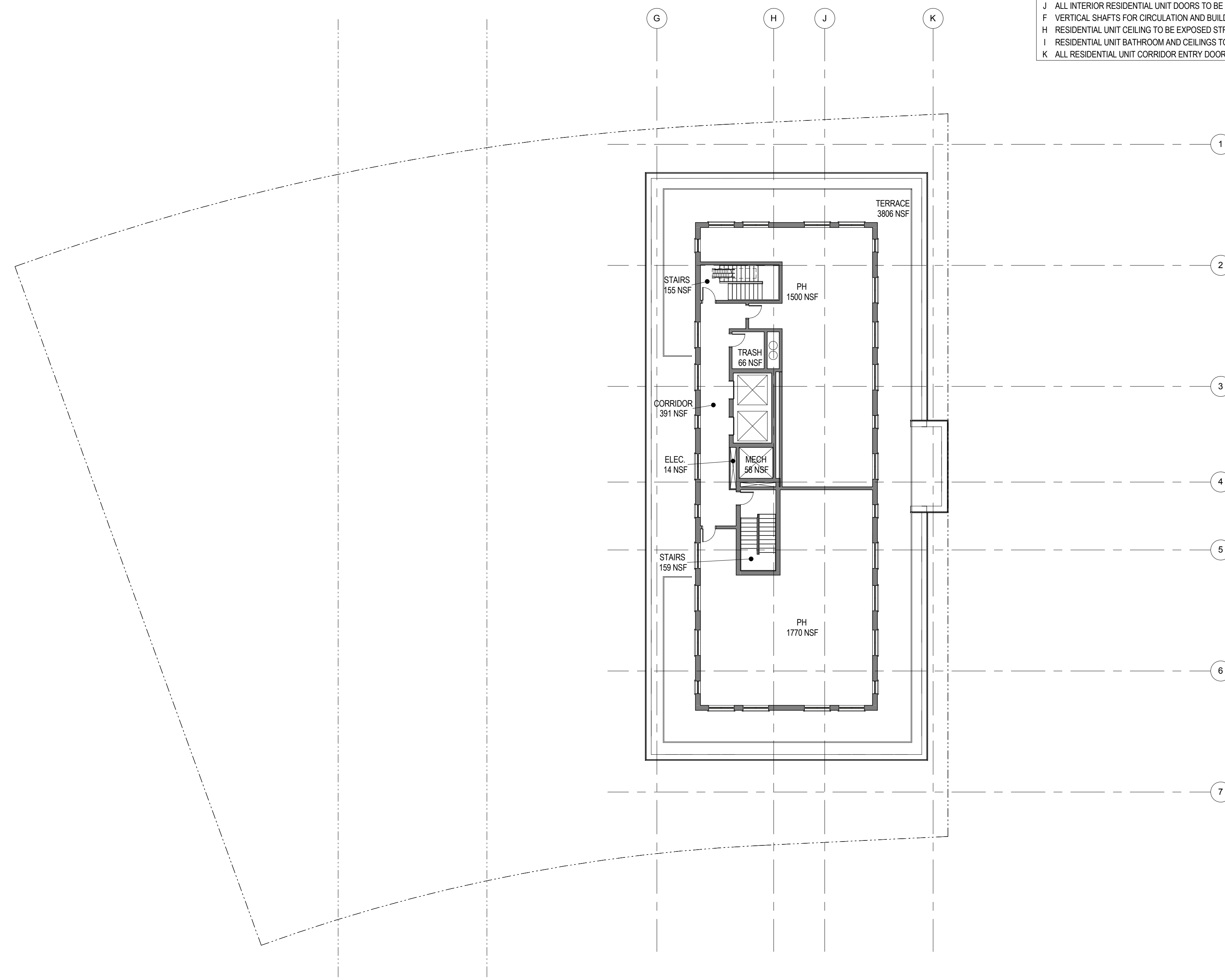
03/13/18



GENERAL PLAN NOTES

- A REFER TO A-400 SERIES DRAWINGS FOR UNIT PLANS.
- B RESIDENTIAL UNIT DEMISING WALLS: 1HR RATED (UL U493); MIN. STC-55; 6-IN (TWO 2-1/2") METAL STUD FRAMING; (2) LAYERS 5/8" TYPE-X GWB EACH SIDE; ACOUSTIC INSULATION
- C RESIDENTIAL UNIT CORRIDOR WALLS: 1HR FIRE RATED (UL U419); MIN. STC-55; 6-IN METAL STUD; (2) LAYERS 5/8" TYPE-X GWB EACH SIDE; ACOUSTIC INSULATION
- D FLOORS BETWEEN RESIDENTIAL LEVELS TO MAINTAIN 2-HR FIRE RESISTANCE RATING
- E FLOORS BETWEEN RESIDENTIAL (R2), GARAGE (S2), AND CONFERENCE(A3) USES TO MAINTAIN 3-HR FIRE RESISTANCE RATING.
- G RESIDENTIAL CORRIDOR CEILINGS TO BE SUSPENDED GYPSUM WALL BOARD, 8'-0" A.F.F.
- J ALL DIMENSIONS ARE TO FACE OF GYP. BD. U.N.O.
- L ALL DIMENSIONS AT 90deg. ANGLES, U.N.O.
- M ALL MANUFACTURER'S NAME, TRADEMARK, AND LOGOS SHALL NOT BE VISIBLE.
- N PATCH AND LEVEL FLOOR SLAB AS REQUIRED FOR SCHEDULED FINISHES.
- O ALL WOOD BLOCKING FOR FRAMING AND MILLWORK TO BE FIRE RETARDANT TREATED.
- P PROVIDE ADDITIONAL FURRING AT COLUMNS AS REQUIRED FOR SWITCHES, OUTLETS, ETC.
- Q C.C. TO LAYOUT ALL PARTITION AND DOOR LOCATIONS ON FLOOR PRIOR TO PROCEEDING WITH CONSTRUCTION. OBTAIN LAYOUT ACCEPTANCE FROM ARCHITECT.
- J ALL INTERIOR RESIDENTIAL UNIT DOORS TO BE NOMINAL 36" SOLID CORE WOOD, U.N.O.
- F VERTICAL SHAFTS FOR CIRCULATION AND BUILDING SYSTEMS TO MAINTAIN 2HR FIRE RESISTANCE RATING
- H RESIDENTIAL UNIT CEILING TO BE EXPOSED STRUCTURAL SLAB ABOVE WITH PLASTER COATING, TYPICAL.
- I RESIDENTIAL UNIT BATHROOM AND CEILINGS TO BE SUSPENDED GYPSUM WALL BOARD, 8'-0" A.F.F.
- K ALL RESIDENTIAL UNIT CORRIDOR ENTRY DOORS TO HAVE A 45 MIN. FIRE RATING.

NO.	DATE



SEAL



Perkins Eastman DC

ONE THOMAS CIRCLE, NW SUITE 270
WASHINGTON, DC 20005
T. 202-495-7430
F.

Owner:
WESTBROOK PARTNERS

Construction Manager:
DAVIS CONSTRUCTION

Civil / Site:
BOHLER DC

Landscape:
WOLF | JOSEY LANDSCAPE ARCHITECTS

Structural:
SK&A DC

Mechanical & Plumbing:
INTERFACE ENGINEERING

Electrical:
INTERFACE ENGINEERING

PROJECT TITLE:
MERIDIAN INTERNATIONAL CENTER

PROJECT No: 65930

DRAWING TITLE:
NINTH FLOOR (PENTHOUSE)

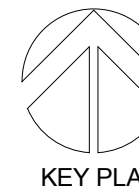
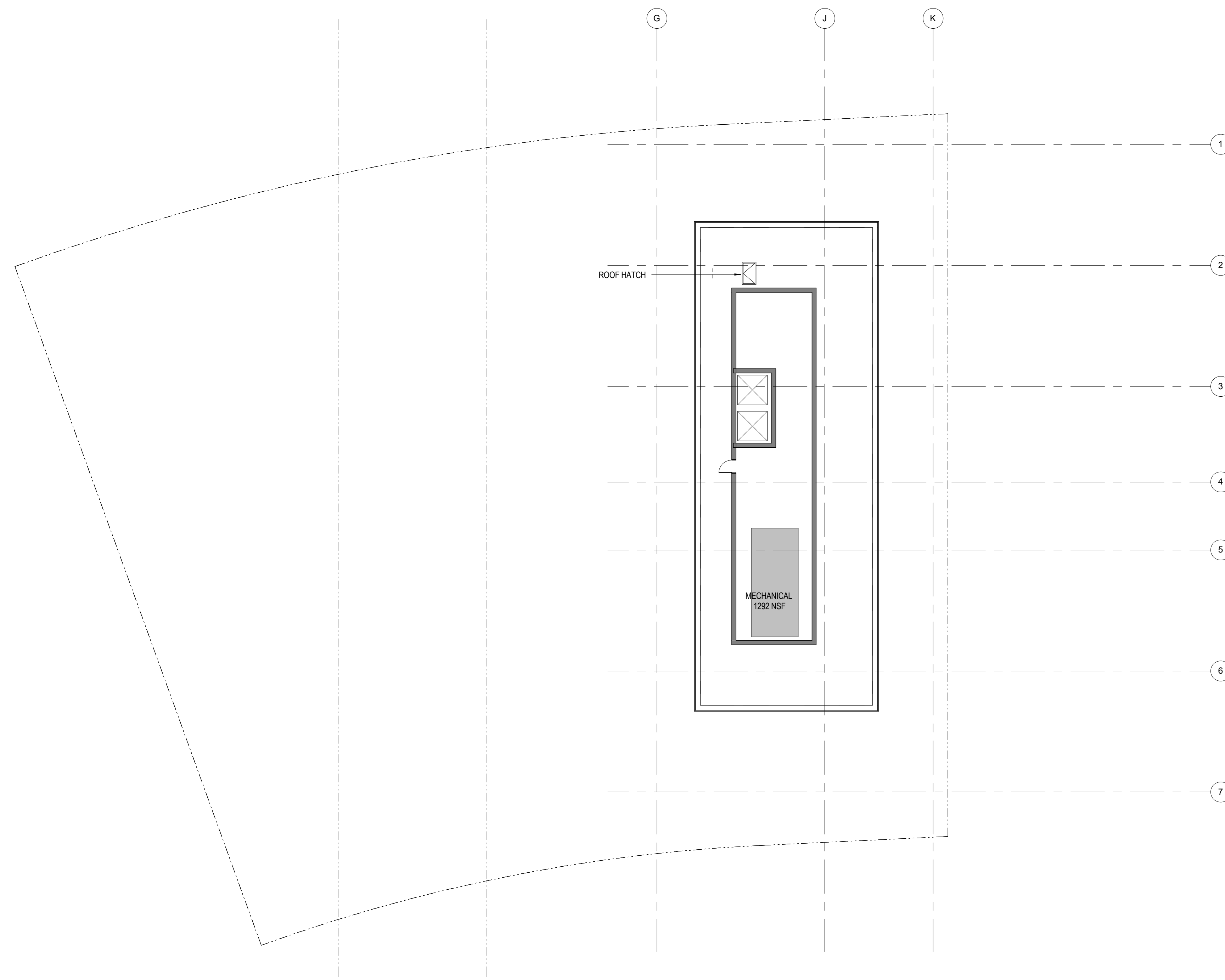
SCALE: 1/16" = 1'-0"

A-112

SCHEMATIC DESIGN

03/13/18

NO.	DATE



KEY PLAN

Perkins Eastman DC

ONE THOMAS CIRCLE, NW SUITE 270
 WASHINGTON, DC 20005
 T. 202.495.7430
 F.

Owner:
WESTBROOK PARTNERS

Construction Manager:
DAVIS CONSTRUCTION

Civil / Site:
BOHLER DC

Landscape:
WOLF | JOSEY LANDSCAPE ARCHITECTS

Structural:
SK&A DC

Mechanical & Plumbing:
INTERFACE ENGINEERING

Electrical:
INTERFACE ENGINEERING

PROJECT TITLE:
MERIDIAN INTERNATIONAL CENTER

PROJECT No: 65930

DRAWING TITLE:
ROOF

SCALE: 1/16" = 1'-0"

A-113

SCHEMATIC DESIGN

03/13/18

NO.	DATE



SEAL



Perkins Eastman DC

ONE THOMAS CIRCLE, NW SUITE 270
WASHINGTON, DC 20005
T. 202.495.7430
F.

Owner:
WESTBROOK PARTNERS

Construction Manager:
DAVIS CONSTRUCTION

Civil / Site:
BOHLER DC

Landscape:
WOLF | JOSEY LANDSCAPE ARCHITECTS

Structural:
SK&A DC

Mechanical & Plumbing:
INTERFACE ENGINEERING

Electrical:
INTERFACE ENGINEERING

PROJECT TITLE:
MERIDIAN INTERNATIONAL CENTER

PROJECT No: 65930

DRAWING TITLE:
SOUTH ELEVATION

1 SOUTH ELEVATION
1/8" = 1'-0"

SCALE: 1/8" = 1'-0"

A-201

SCHEMATIC DESIGN

03/13/18

C:\REVIT LOCAL\65930_Architectural_a.martinmacho.rvt
6/12/2018 12:10:38 PM



1 NORTH ELEVATION
1/8" = 1'-0"



2 NORTH ELEVATION - GARDEN APARTMENTS
1/8" = 1'-0"

NO.	DATE

SEAL



Perkins Eastman DC

ONE THOMAS CIRCLE, NW SUITE 270
WASHINGTON, DC 20005
T. 202.495.7430
F.

Owner:
WESTBROOK PARTNERS

Construction Manager:
DAVIS CONSTRUCTION

Civil / Site:
BOHLER DC

Landscape:
WOLF | JOSEY LANDSCAPE ARCHITECTS

Structural:
SK&A DC

Mechanical & Plumbing:
INTERFACE ENGINEERING

Electrical:
INTERFACE ENGINEERING

PROJECT TITLE:
MERIDIAN INTERNATIONAL CENTER

PROJECT No: 65930

DRAWING TITLE:
NORTH ELEVATION

SCALE: 1/8" = 1'-0"

A-202

SCHEMATIC DESIGN

03/13/18

C:\REVIT LOCAL\65930_Architectural_a.martinmacho.rvt
6/12/2018 12:11:31 PM

NO.	DATE

SEAL



Perkins Eastman DC

ONE THOMAS CIRCLE, NW SUITE 270
WASHINGTON, DC 20005
T. 202.495.7430
F.

Owner:
WESTBROOK PARTNERS

Construction Manager:
DAVIS CONSTRUCTION

Civil / Site:
BOHLER DC

Landscape:
WOLF | JOSEY LANDSCAPE ARCHITECTS

Structural:
SK&A DC

Mechanical & Plumbing:
INTERFACE ENGINEERING

Electrical:
INTERFACE ENGINEERING

PROJECT TITLE:
MERIDIAN INTERNATIONAL CENTER

PROJECT No: 65930
DRAWING TITLE:
EAST ELEVATION

SCALE: 1/8" = 1'-0"

A-203

SCHEMATIC DESIGN

03/13/18



1 EAST ELEVATION
1/8" = 1'-0"

C:\REVIT LOCAL\65930_Architectural_a.martinmacho.rvt
6/12/2018 12:12:34 PM

NO.	DATE

SEAL



Perkins Eastman DC

ONE THOMAS CIRCLE, NW SUITE 270
WASHINGTON, DC 20005
T. 202.495.7430
F.

Owner:
WESTBROOK PARTNERS

Construction Manager:
DAVIS CONSTRUCTION

Civil / Site:
BOHLER DC

Landscape:
WOLF | JOSEY LANDSCAPE ARCHITECTS

Structural:
SK&A DC

Mechanical & Plumbing:
INTERFACE ENGINEERING

Electrical:
INTERFACE ENGINEERING

PROJECT TITLE:
MERIDIAN INTERNATIONAL CENTER

PROJECT No: 65930

DRAWING TITLE:
WEST ELEVATION

SCALE: 1/8" = 1'-0"

A-204

SCHEMATIC DESIGN

03/13/18



1 WEST ELEVATION
1/8" = 1'-0"

C:\REVIT_LOCAL\65930_Architectural_a.martinmacho.rvt
6/12/2018 12:13:29 PM